

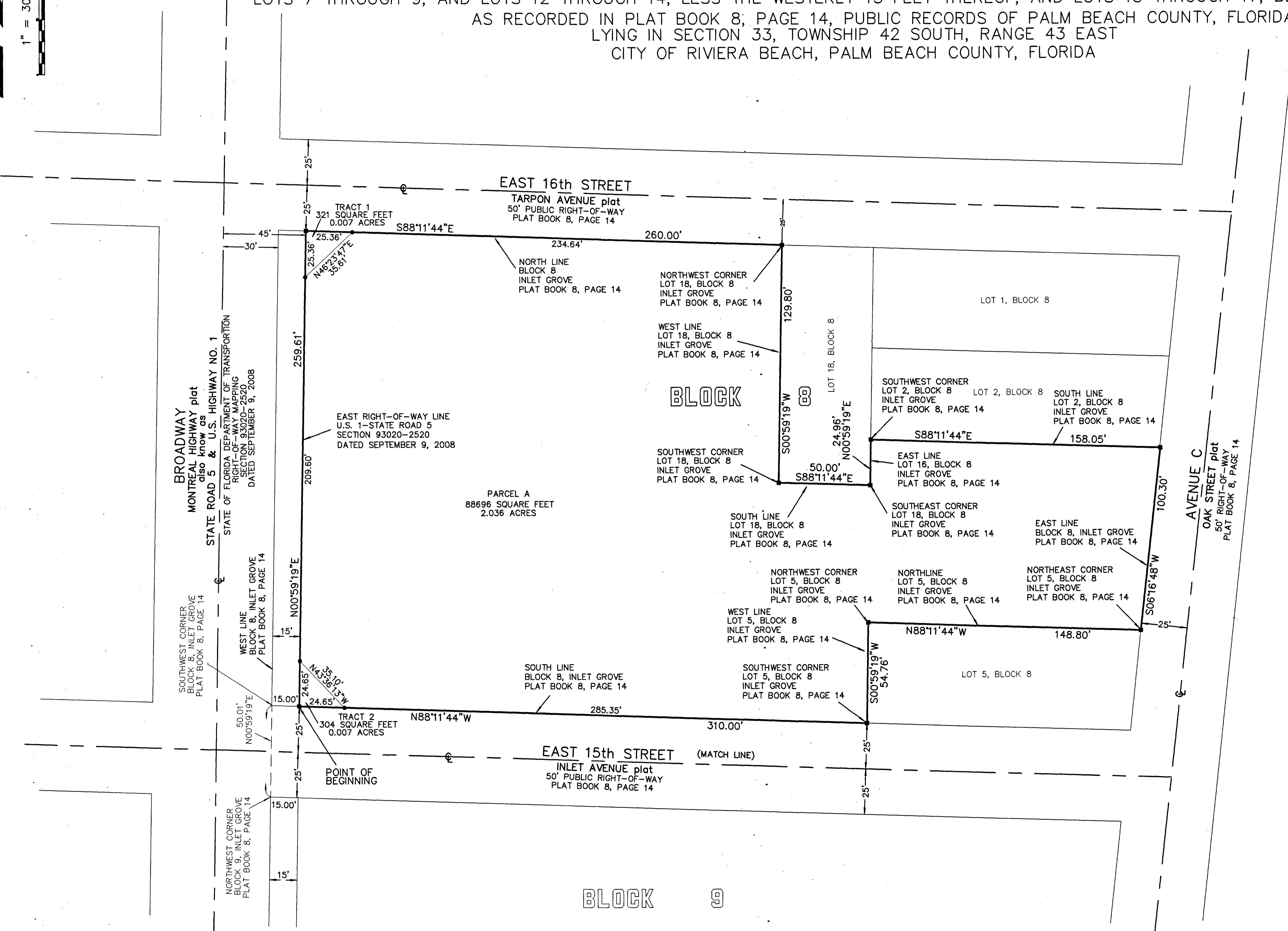
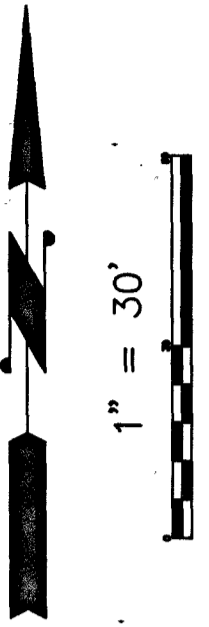
VIKING SALES & SERVICE CENTER - VALHALLA BOAT SALES

98

BEING A REPLAT LOTS 3 AND 4, AND LOTS 6 THROUGH 9, AND LOTS 10 THROUGH 14, LESS THE WESTERLY 15 FEET THEREOF,
AND LOTS 15 THROUGH 17, BLOCK 8, INLET GROVE
AS RECORDED IN PLAT BOOK 8, PAGE 14, PUBLIC RECORDS OF PALM BEACH COUNTY, FLORIDA
TOGETHER WITH:
LOTS 7 THROUGH 9, AND LOTS 12 THROUGH 14, LESS THE WESTERLY 15 FEET THEREOF, AND LOTS 15 THROUGH 17, BLOCK 9, INLET GROVE,
AS RECORDED IN PLAT BOOK 8, PAGE 14, PUBLIC RECORDS OF PALM BEACH COUNTY, FLORIDA
LYING IN SECTION 33, TOWNSHIP 42 SOUTH, RANGE 43 EAST
CITY OF RIVIERA BEACH, PALM BEACH COUNTY, FLORIDA

PAGE 2 OF 3

B



- LEGEND:**
- ⊕ = CENTERLINE
 - = SET 4" x 4" CONCRETE MONUMENT & DISC "P.R.M. L.B. 7571"
 - = FOUND 4" x 4" CONCRETE MONUMENT (NO ID)
 - = SET IRON ROD & CAP "L.B. 7571"
- P.R.M. = PERMANENT REFERENCE MONUMENT

THIS INSTRUMENT WAS PREPARED BY
RONALD E. STOTLER, P.L.S.
FLORIDA SURVEYOR & MAPPER #5026
IN THE OFFICE OF MAGELLAN SURVEYING & MAPPING, INC.
450 SOUTH OLD DIXIE HIGHWAY, SUITE 10
JUPITER, FLORIDA, 33458

JOB NUMBER: 21-275

MAGELLAN SURVEYING & MAPPING, INC.
PROFESSIONAL LAND SURVEYORS
M.S. & M.
450 S. OLD DIXIE HIGHWAY, SUITE 10
JUPITER, FLORIDA 33458
SINCE 2007 561-746-8745 FAX 561-746-9632 E-mail info@magellansurveying.com